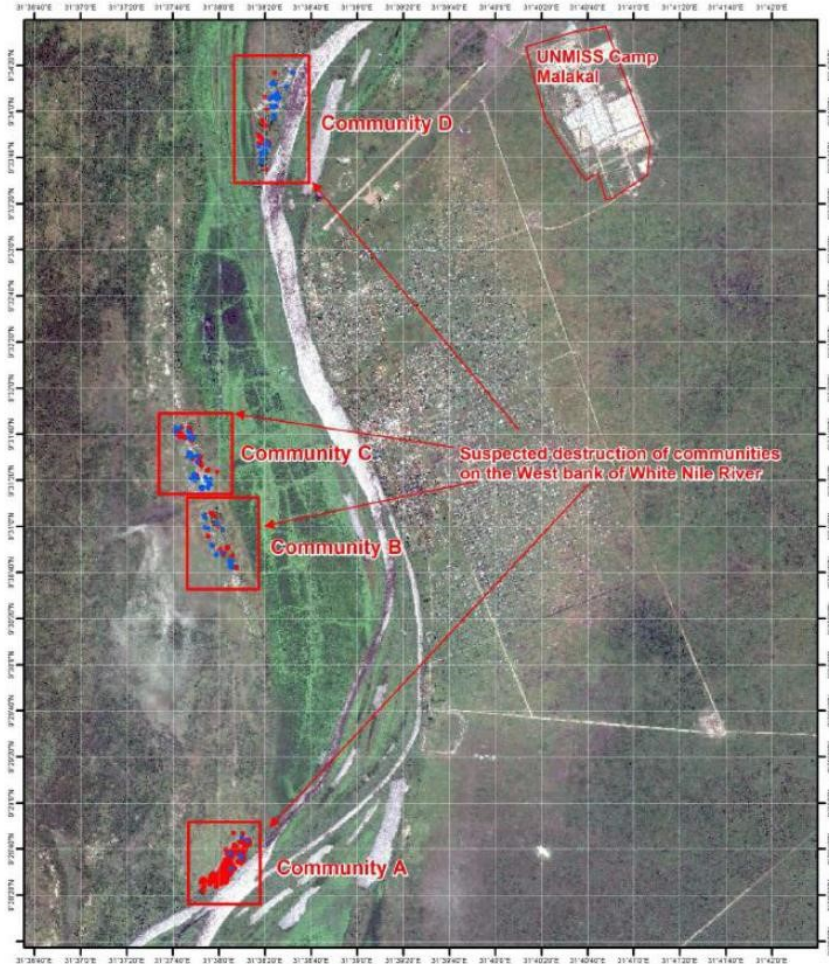


Annex II

Destruction of Shilluk areas of Upper Nile State



Imagery source: World View 2 copyright DG; under next view licence
 Acquisition date: 25 August 2015



United Nations
 Department of Field Support
 ICTD – Geospatial Information Section

**Observed destruction
 in communities on the
 west bank of White
 Nile river, Malakal
 vicinity**

Malakal County
 Upper Nile State
 South Sudan

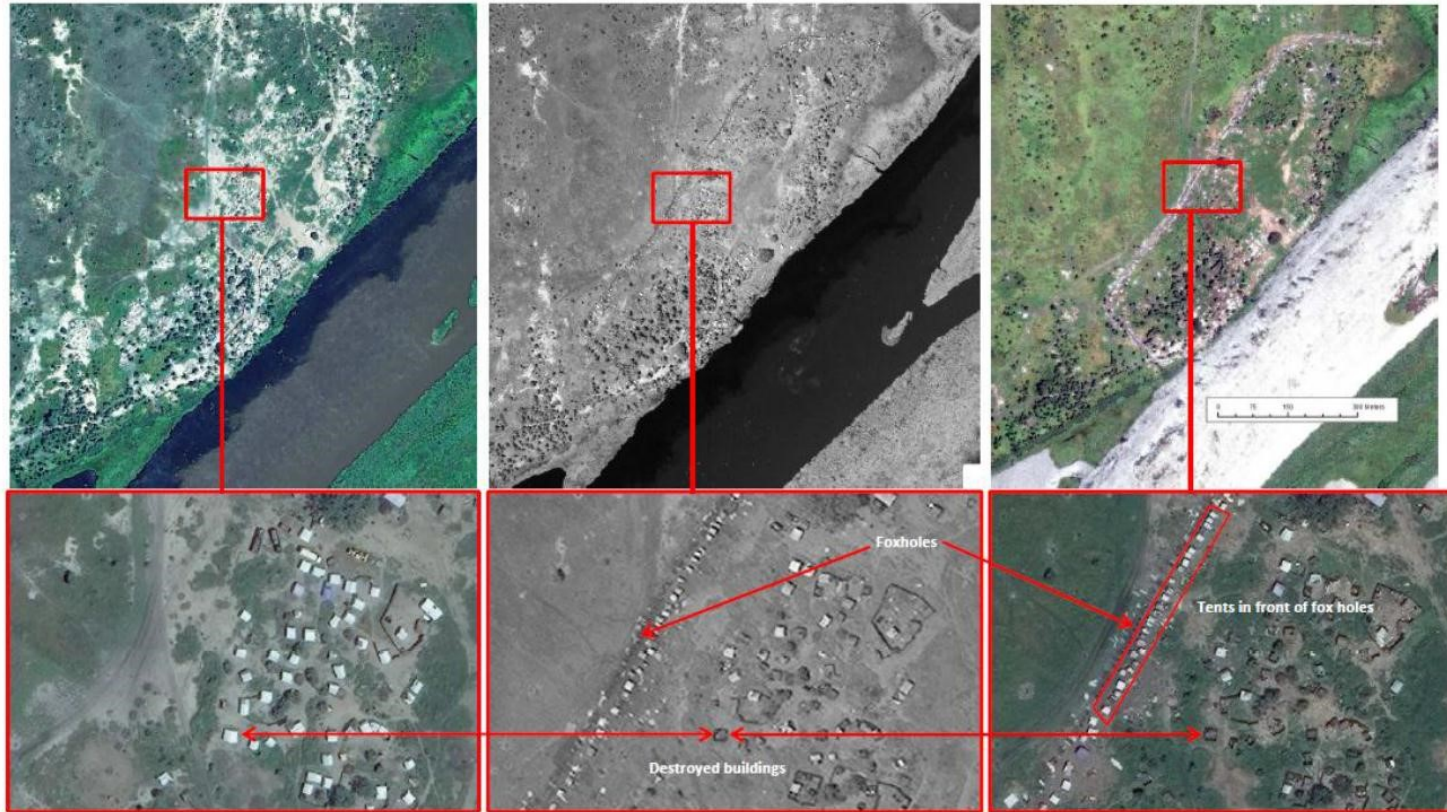
29 September 2015

MAIN OBSERVATIONS:

Widespread destructions in four communities have been identified in the west bank of White Nile river in the vicinity of Malakal town.

- Community A (31°37'52"E 09°31'22"N)
- Community B (31°38'06"E 09°30'42"N)
- Community C (31°37'49"E 09°31'31"N)
- Community D (31°38'25"E 09°34'03"N)

Observed destruction in community A. West bank of White Nile River, Malakal vicinity



25 August 2015

15 September 2015

25 September 2015

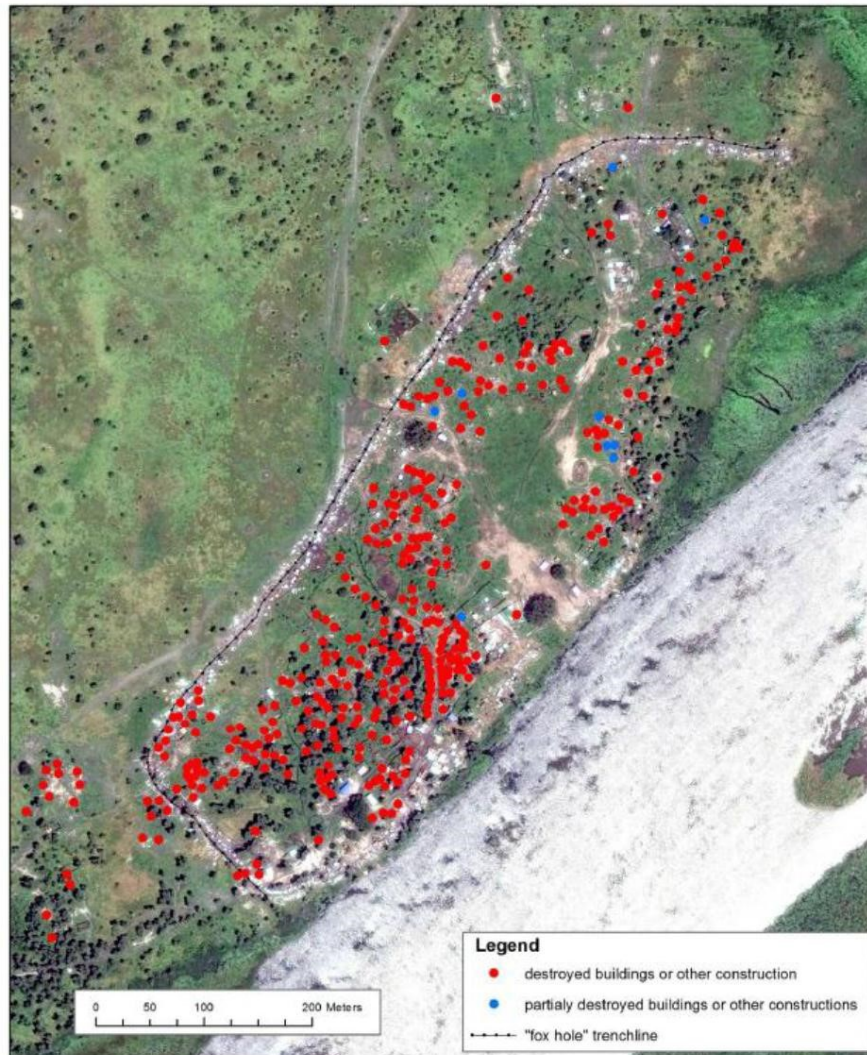
At the location (31°37'52"E 09°31'22"N) (across the river from Malakal) on the west bank of White Nile river, widespread destructions in a community has taken place in-between 25 August and 15 September 2015. It has been estimated that approximately 350 buildings and other constructions have been destroyed and approximately 10 buildings and other constructions have been partially destroyed (see next page for detail image). During the same period of time a line of foxholes has been constructed facing north-west. In addition, a line of temporary constructions (possibly tents) has been installed in front of the foxhole line.

Imagery source: World View 3 copyright DG (Acquisition Date 2015-08-25 08:41 UTC) ; World View 1 copyright DG (Acquisition Date 2015-08-15 10:05 UTC) ; World View 3 copyright DG (Acquisition Date 2015-09-25 08:35 UTC) ;

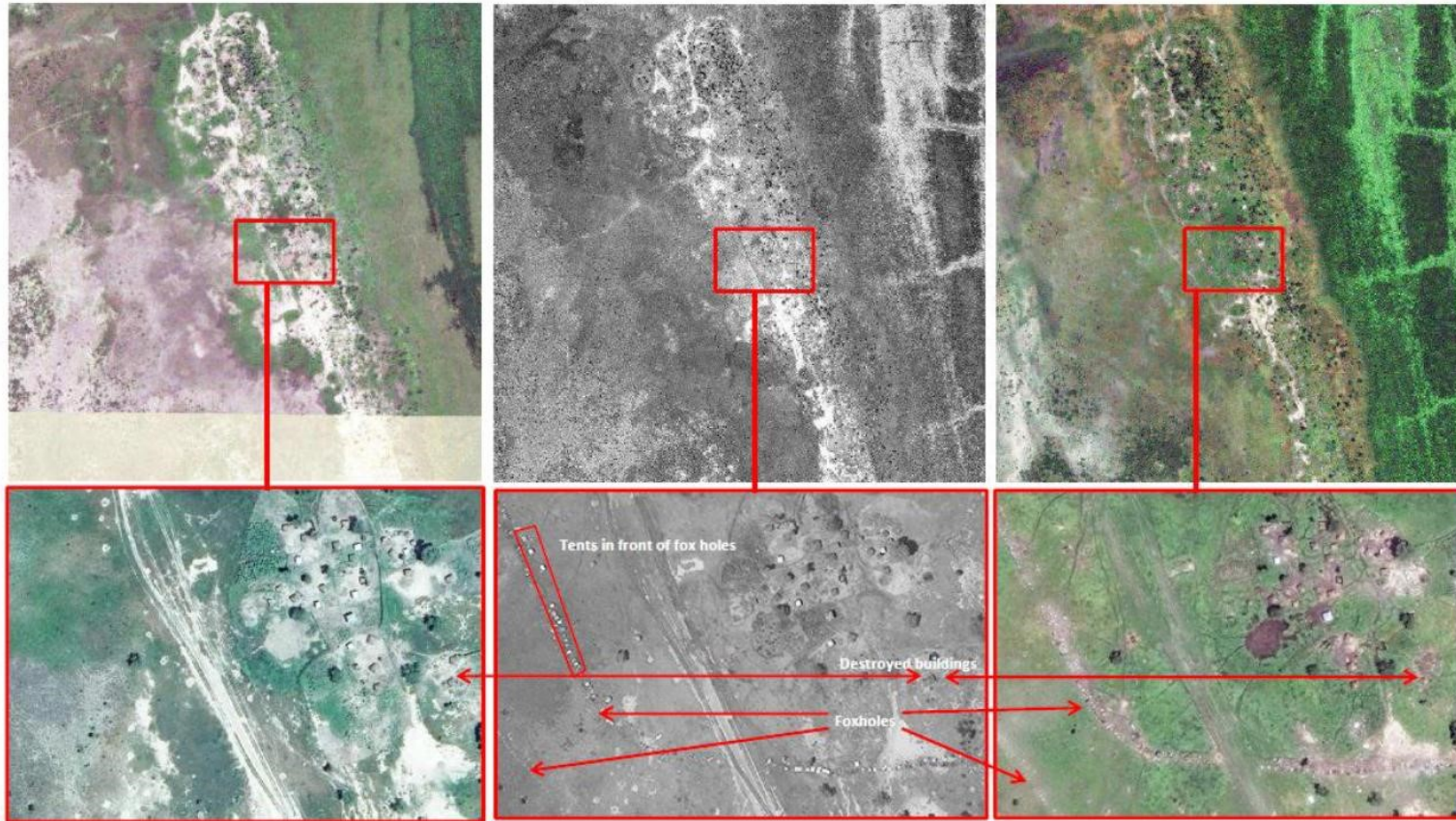
Observed destruction in community A. West bank of White Nile River,
Malakal vicinity (detailed image)



Imagery source: World View 3 copyright DG (Acquisition Date 2015-09-25 08:35 UTC) ;



Observed destructions in community B. West bank of White Nile River, Malakal vicinity



25 August 2015

15 September 2015

25 September 2015

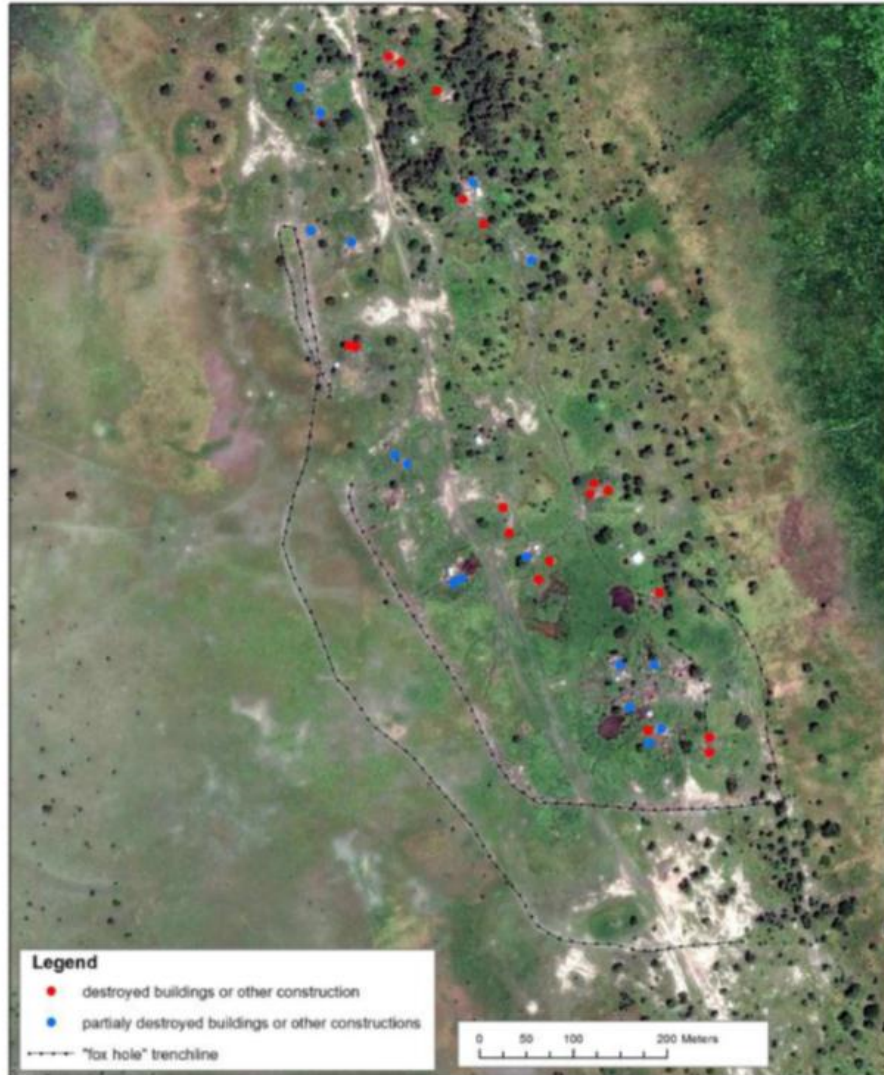
At the location (31°38'06"E 09°30'42"N) (across the river from Malakal) on the west bank of White Nile river, widespread destructions in a community has taken place in-between 25 August, 15 September and 25 September 2015. It has been estimated that approximately 18 buildings and other constructions have been destroyed and approximately 16 buildings and other constructions have been partially destroyed (see next page for detail image). During the same period, two perimeters of foxhole lines have been constructed facing west. In addition, a line of temporary constructions (possibly tents) has been installed in front of internal foxhole line in between 25 August and 15 September 2015.

Imagery source: World View 3 copyright DG (Acquisition Date 2015-08-25 08:41 UTC) ; World View 1 copyright DG (Acquisition Date 2015-08-15 10:05 UTC) ; World View 3 copyright DG (Acquisition Date 2015-09-25 08:35 UTC) ;

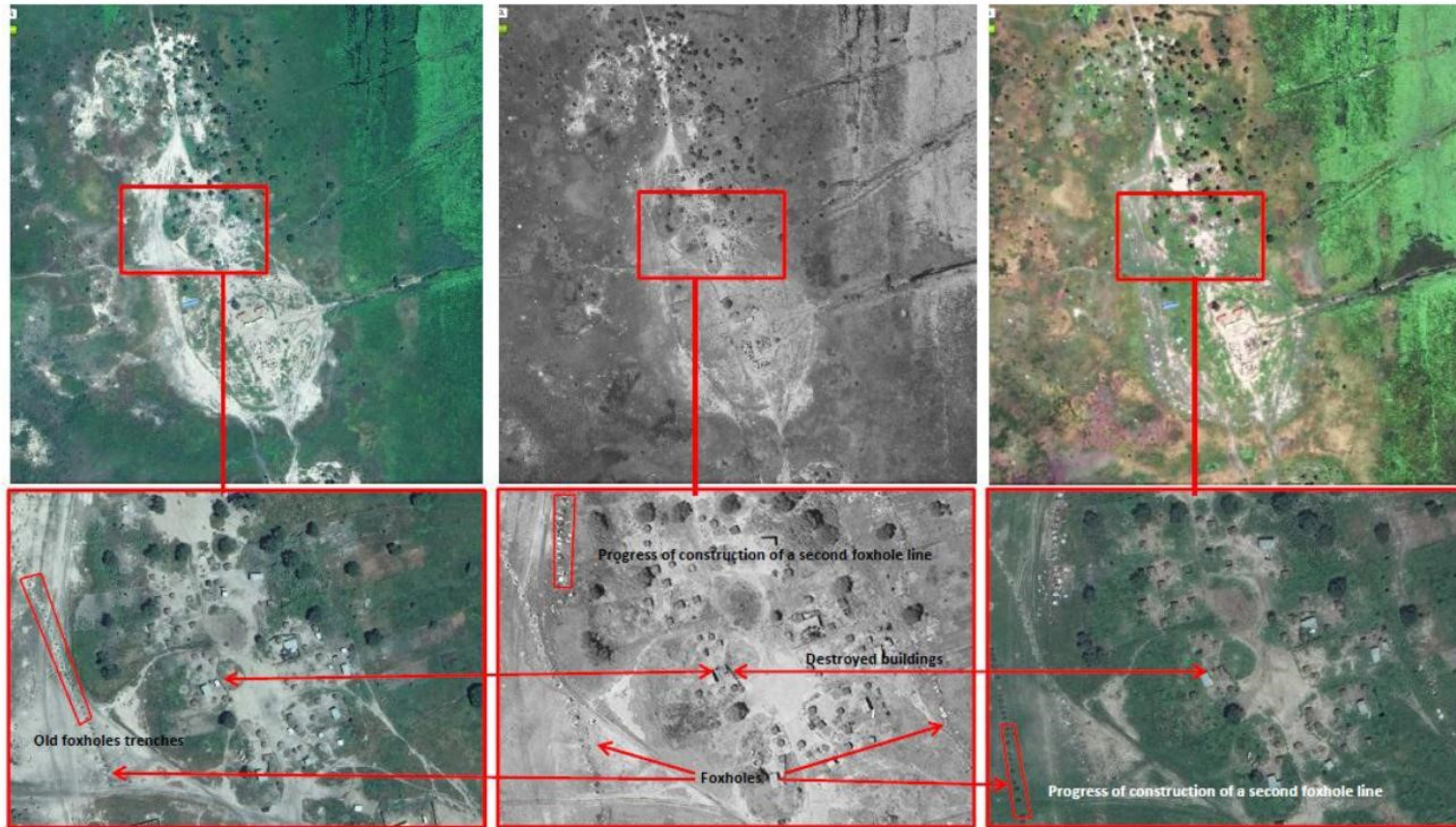
Observed destructions in community B. West bank of White Nile River,
Malakal vicinity (detailed image)



Imagery source: World View 3 copyright DG (Acquisition Date 2015-09-25 08:35 UTC);



Observed destructions in community C. West bank of White Nile River, Malakal vicinity

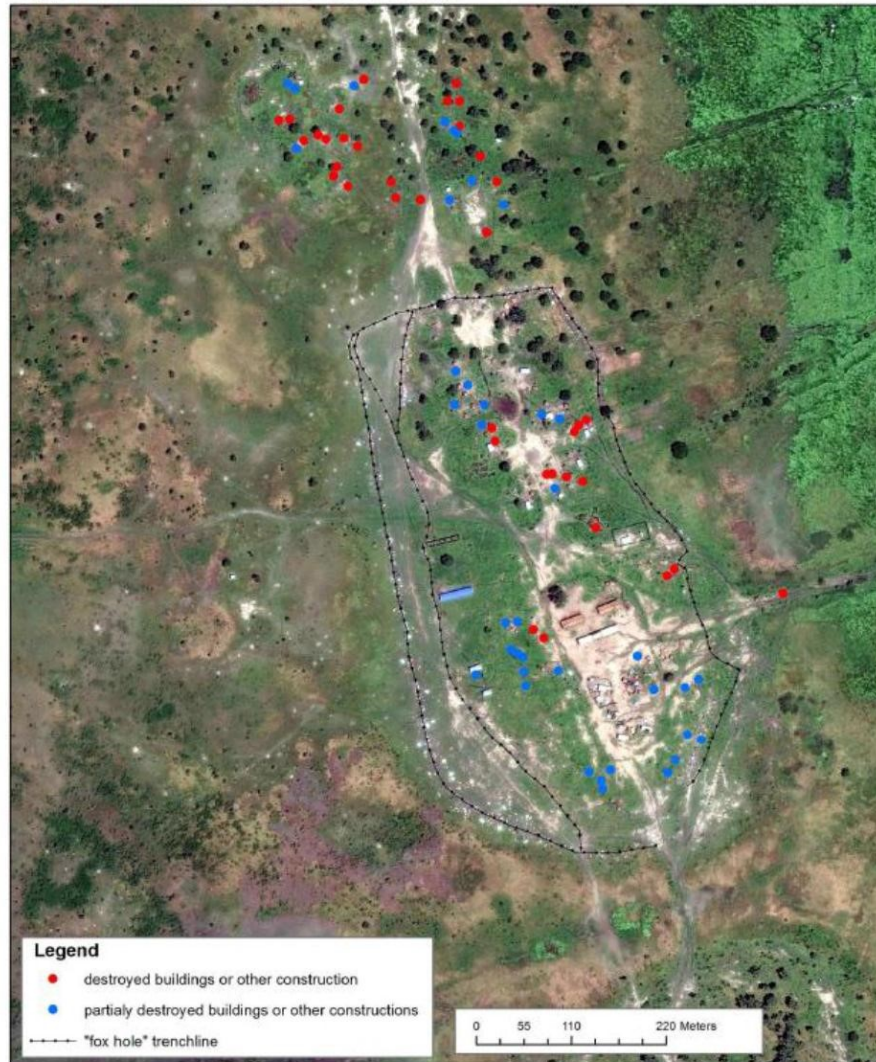


25 August 2015 **15 September 2015** **25 September 2015**
 At the location (31°37'49"E 09°31'31"N) (across the river from Malakal) on the west bank of White Nile river, widespread destructions in a community has taken place between 25 August, 15 September 2015. However the destruction in this community is less severe than in the Community A. It has been estimated that approximately 37 buildings and other constructions have been destroyed and approximately 39 buildings and other constructions have been partially destroyed (see next page for detail picture). The first line of foxholes was constructed between June and November 2014. The construction of the second line began between 25 August and 15 September 2015. Foxhole lines surround community C.

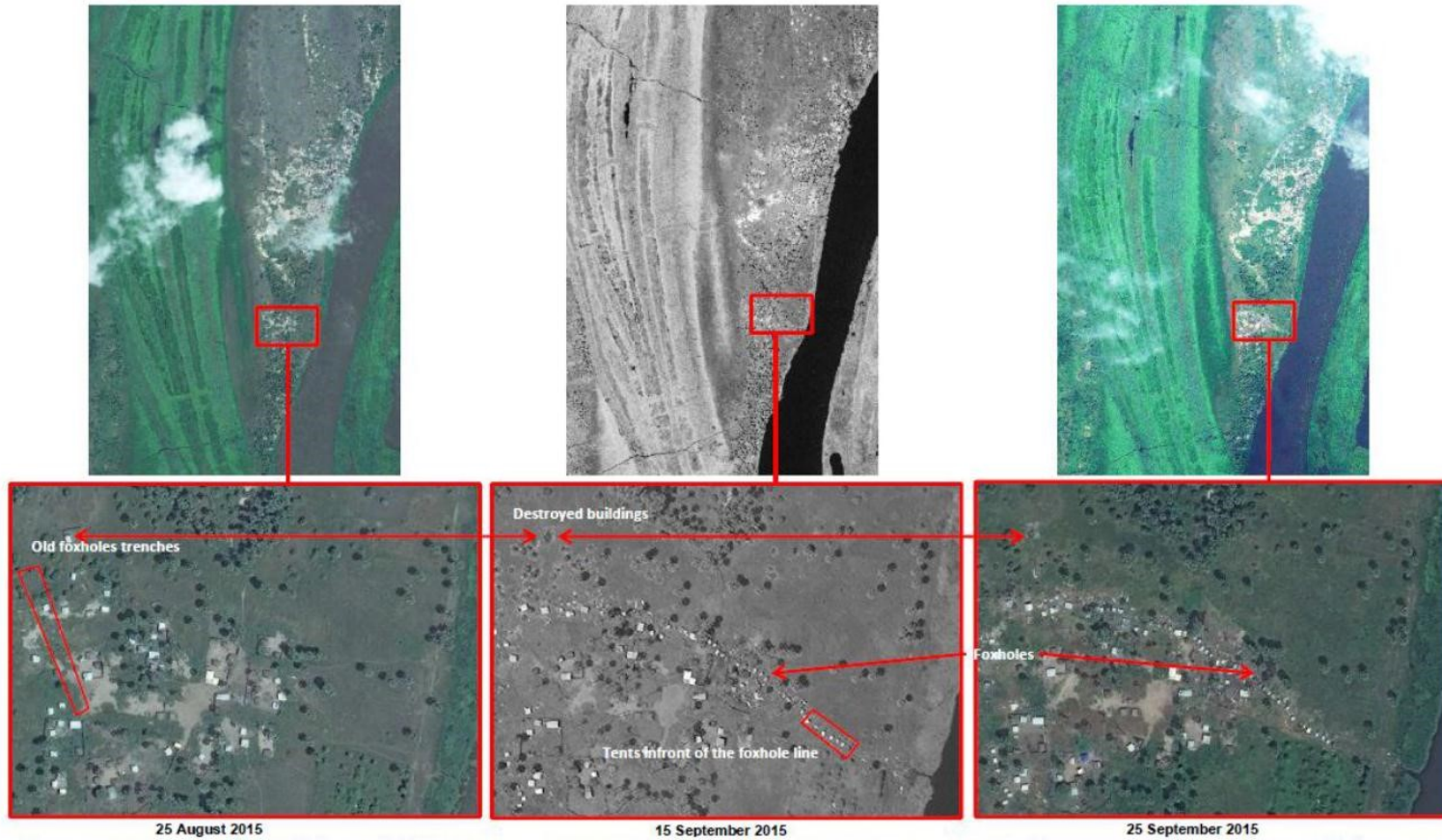
Imagery source: World View 3 copyright DG (Acquisition Date 2015-08-25 08:41 UTC) ; World View 1 copyright DG (Acquisition Date 2015-08-15 10:05 UTC) ; World View 3 copyright DG (Acquisition Date 2015-09-25 08:35 UTC) ;

Observed destructions in community C. West bank of While Nile
River, Malakal vicinity (detailed image)

Imagery source: World View 3 copyright DG (Acquisition Date 2015-09-25 08:35 UTC) ;



Observed destruction in community D. Island on White Nile River, Malakal vicinity



At the location (31°38'25"E 09°34'03"N) on an island on White Nile river (in the vicinity of Malakal), widespread destruction in a community has taken place between 25 August, 15 September 2015. However, the destruction in this community is less severe than in the Community A. It has been estimated that approximately 15 buildings and other constructions have been destroyed and approximately 33 buildings and other constructions have been partially destroyed (see next page for detail image). During the same period of time, a line of foxholes was constructed facing north-west.

Imagery source: World View 3 copyright DG (Acquisition Date 2015-08-25 08:41 UTC) ; World View 1 copyright DG (Acquisition Date 2015-08-15 10:05 UTC) ; World View 3 copyright DG (Acquisition Date 2015-09-25 08:35 UTC) ;

Observed destruction in community D. Island on White Nile River,
Malakal vicinity (detailed image)

Imagery source: World View 3 copyright DG (Acquisition Date 2015-09-25 08:35 UTC) ;

