

Annex 80: Yongbyon 5MW (e) Reactor and Light Water Reactor



Map No. 4592.1 UNITED NATIONS
January 2019

Office of Information and Communications Technology (OICT)
Geospatial Information Section

Annex 81: Yongbyon Steam Plant



Map No. 4589.2 United Nations
August 2018

Department of Field Support
Geospatial Information Section (formerly Cartographic Section)

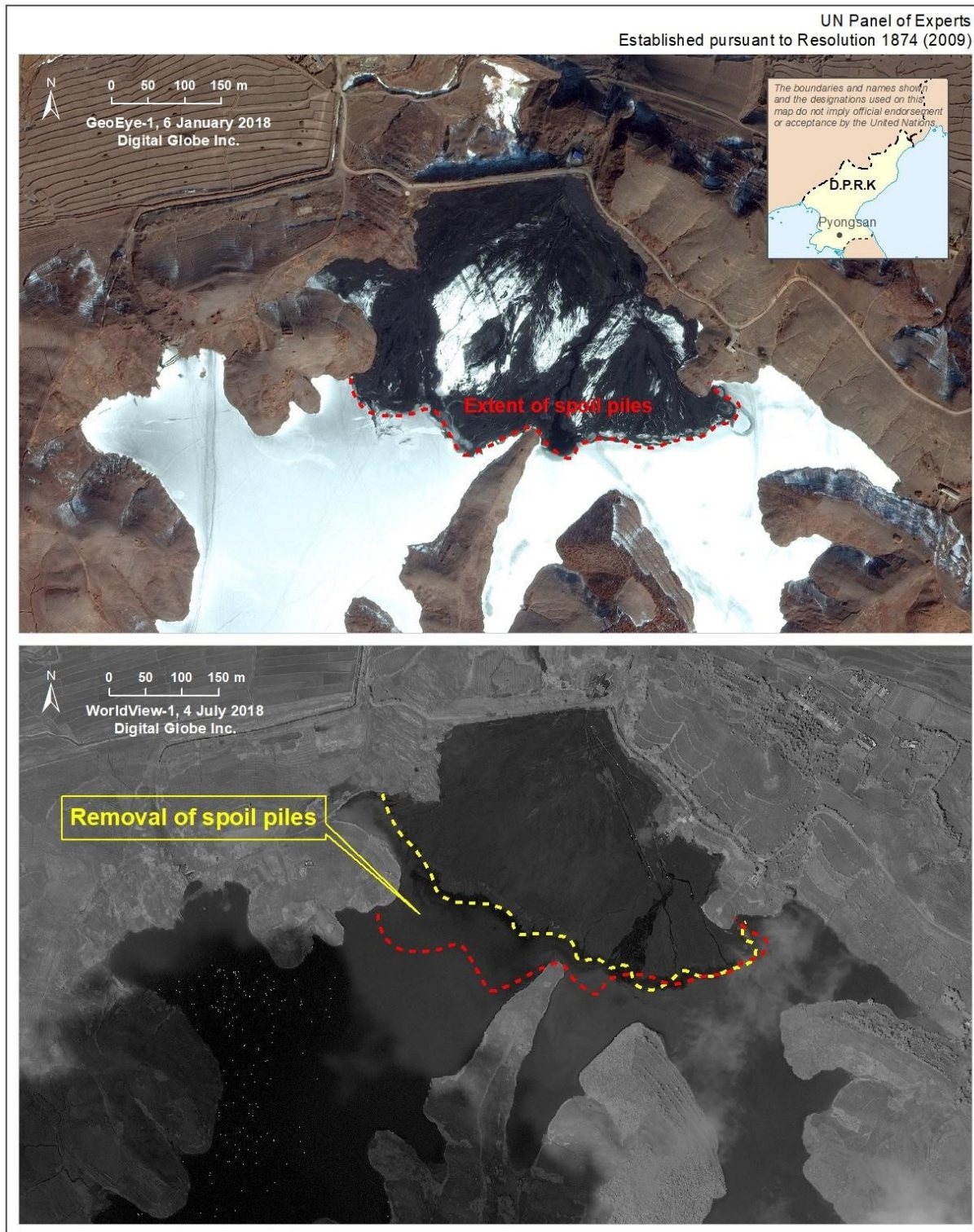
Annex 82: Punggye-ri Nuclear Test Site



Map No. 4592.2 UNITED NATIONS
January 2019

Office of Information and Communications Technology
Geospatial Information Section

Annex 83: Pyongsan Uranium Mine and Concentration Plant



Map No. 4592.3 UNITED NATIONS
January 2019

Office of Information and Communications Technology
Geospatial Information Section

2. A Member State confirmed the imagery analysis of the Panel concerning the partial dismantlement of Sohae (Tongchang-ri) satellite rocket launch site¹⁹³ and of the vertical missile-engine test stand¹⁹⁴ (figure III). Dismantlement may be reversed as only light or moveable parts, such as the metal superstructure, were dismantled.

Figure III

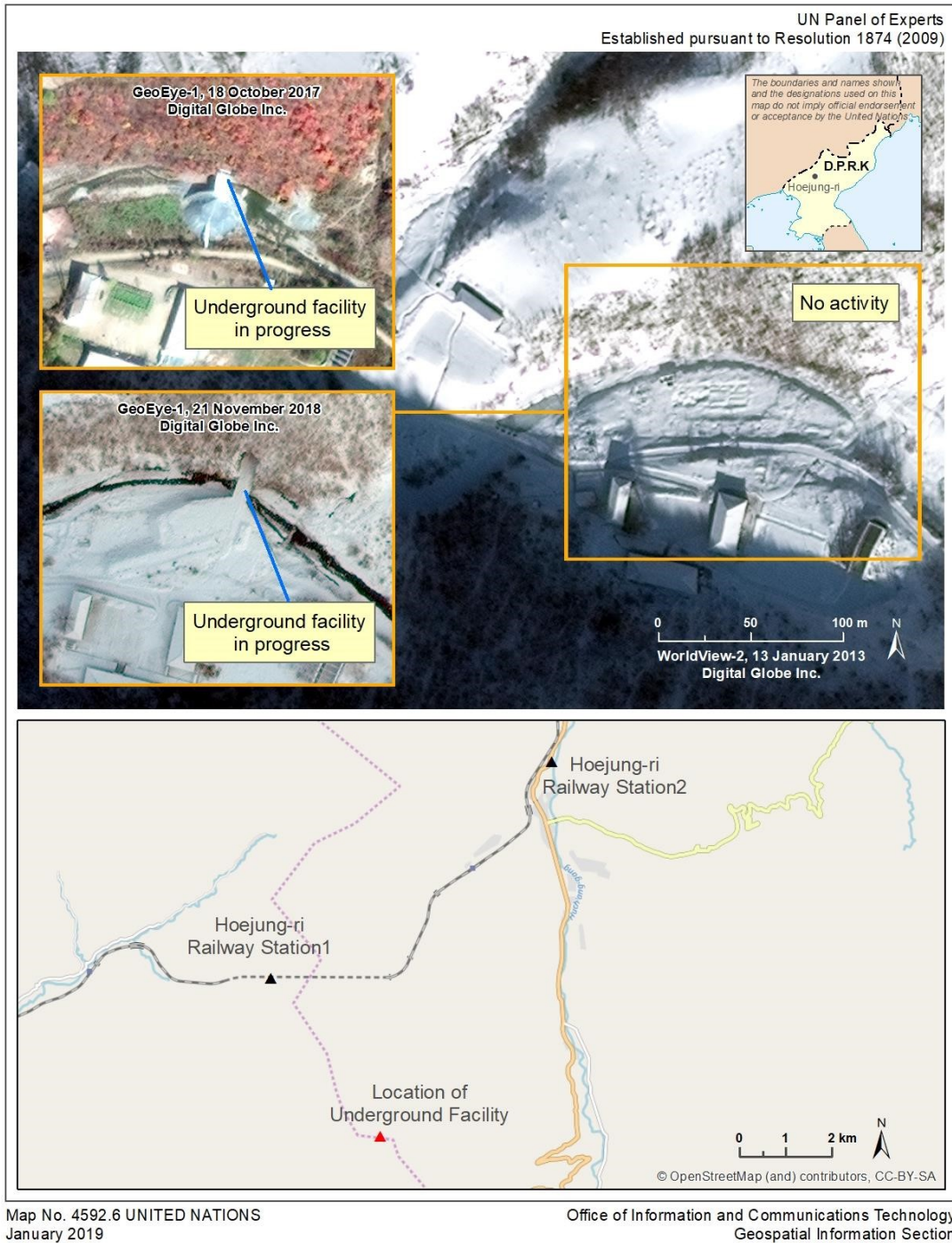


¹⁹³ Location of the rocket launch pad: 39°39'36.22"N 124°42'19.27"E;

¹⁹⁴ Location of the engine test stand: 39°39'11.32"N 124°42'51.30"E;

3. The Panel monitored developments at the Hoejung-ni Missile Operating base and the railway station¹⁹⁵

Figure IV



¹⁹⁵ Location of the underground facility: 41°21'56.17"N 126°55'42.32"E and rail station, 41°23'6.65"N 126°54'28.58"E