

Apparent gold mining site in Lauru, South Sudan

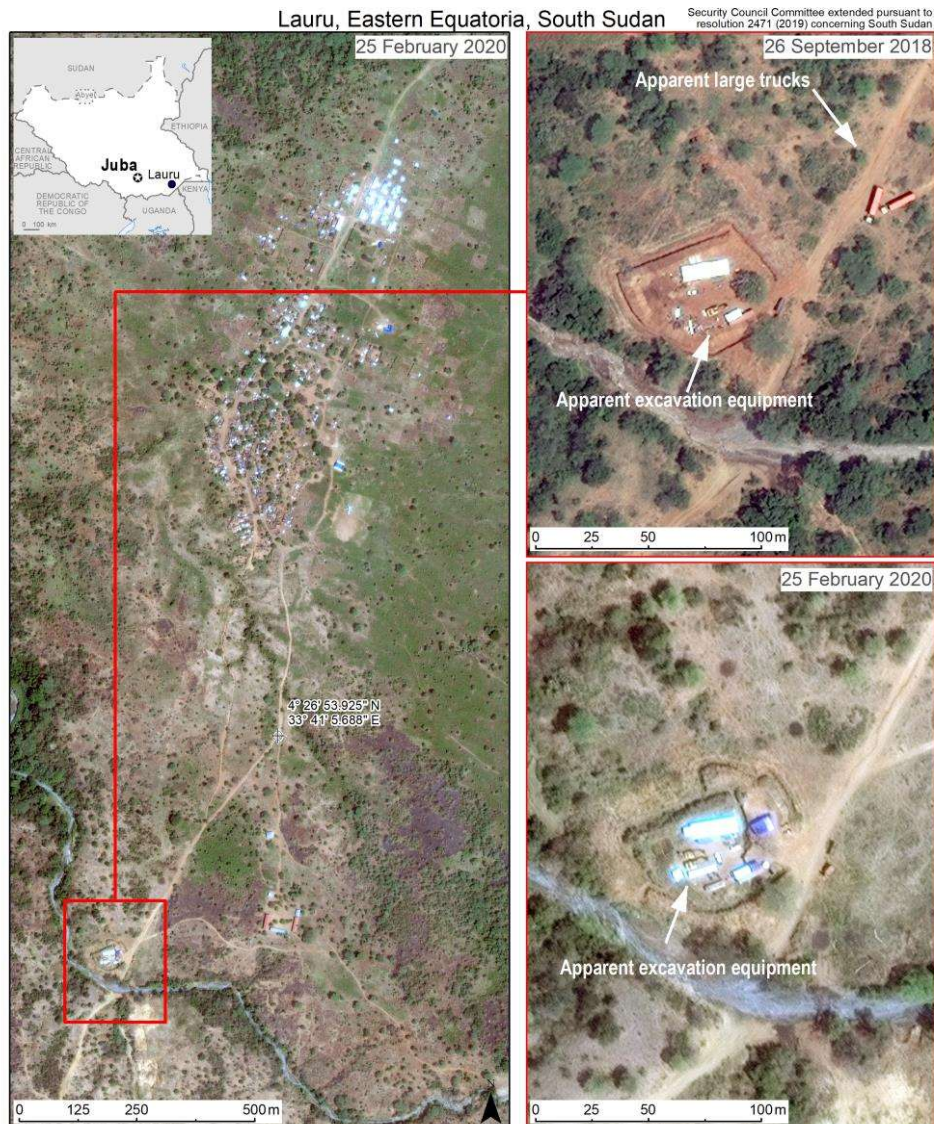


Image Source
WorldView-2, 2020-02-25T08:22:28, (C) COPYRIGHT 2020 DigitalGlobe, Inc.
GeoEye-1, 2018-09-26T08:20:55, (C) COPYRIGHT 2020 DigitalGlobe, Inc.
UNITED NATIONS Map No.4606.1 (February 2020)

The boundaries and names shown and the designations used on this map do not imply official endorsement or acceptance by the United Nations
Office of Information and Communications Technology
Geospatial Information Section

H. Illegal exploitation and trade of timber in Eastern Equatoria

102. As the Panel previously reported, the illegal exploitation and trade of timber, in particular of teak, mahogany and *afzelia africana*, by SSPDF and SPLA-IO in areas under their control is a risk to the peace, security and stability of Central Equatoria and Eastern Equatoria (see [S/2019/301](#) and [S/2019/897](#)).

103. To combat the illegal exploitation of the country's natural resources, in 2019 the Transitional National Legislature called for a steep increase in tariffs on the timber trade and estimated that a tariff of just \$6.50 for a truckload of timber was too low.¹⁵⁷

¹⁵⁷ South Sudan, Transitional National Legislature, "Fiscal year 2019/20 budget report in the third reading stage", 21 August 2019; document on file with the Panel.