

Annex 8: Implementation of the Ban on Charcoal

A. Charcoal production areas, transportation routes and export sites

Figure 1: Overview of main charcoal stockpiles used for export in Lower Juba, Somalia.

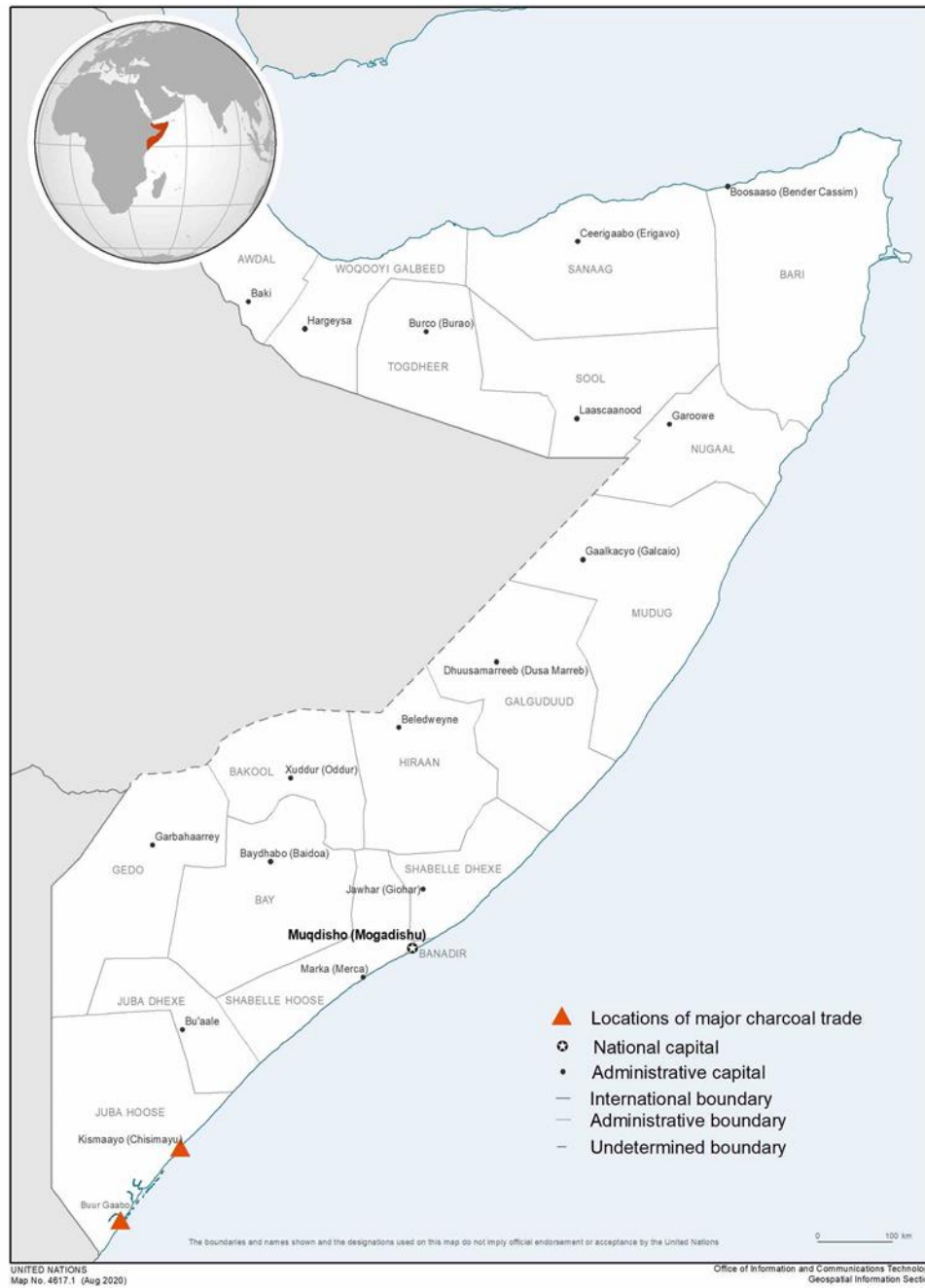
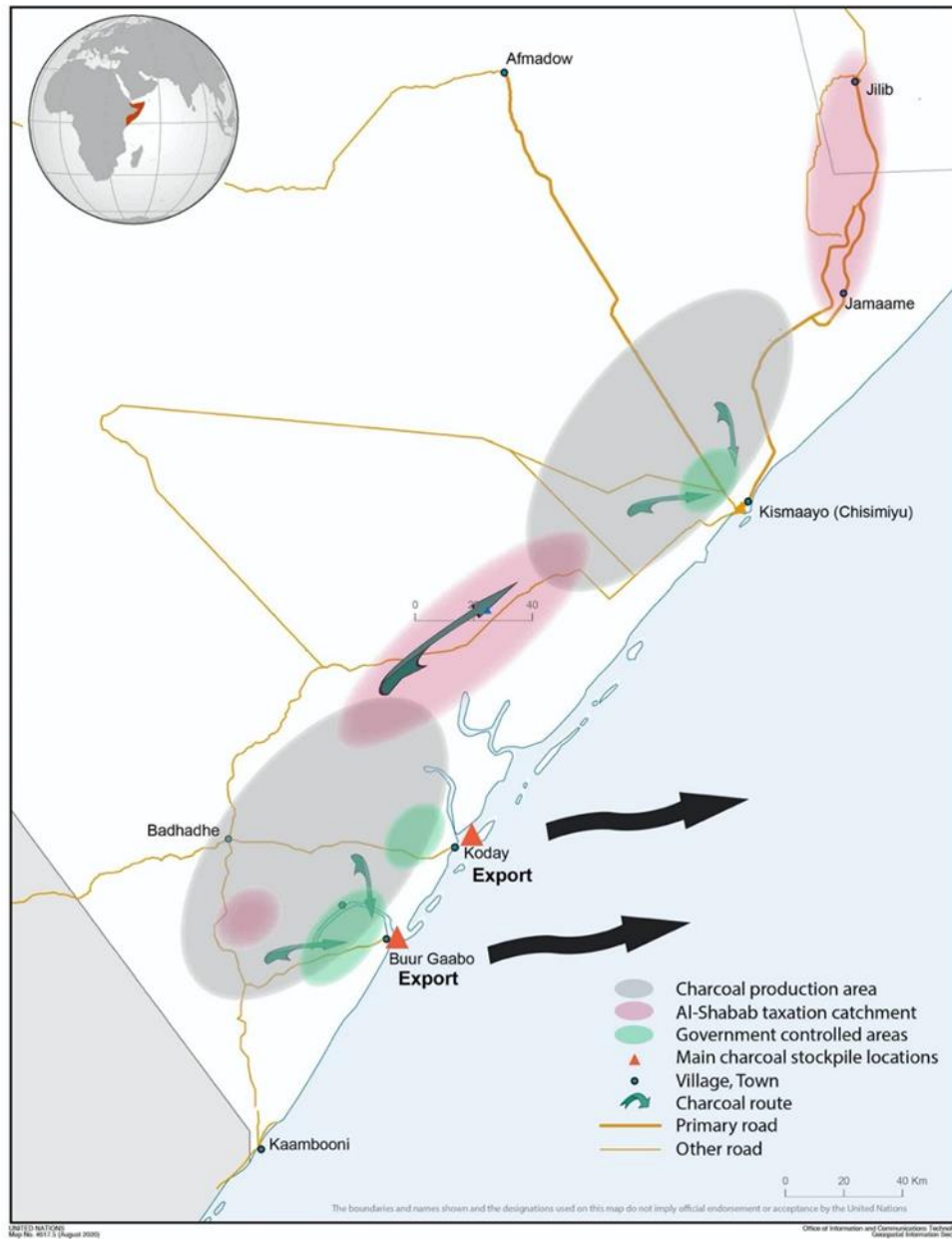


Figure 2: Charcoal production areas and transportation routes in Lower Juba, Somalia.



C. Charcoal Stockpile Analysis

Satellite Analysis: Kismayo

Figure 6: Overview of key stockpile locations in Kismayo, Lower Juba, Somalia.

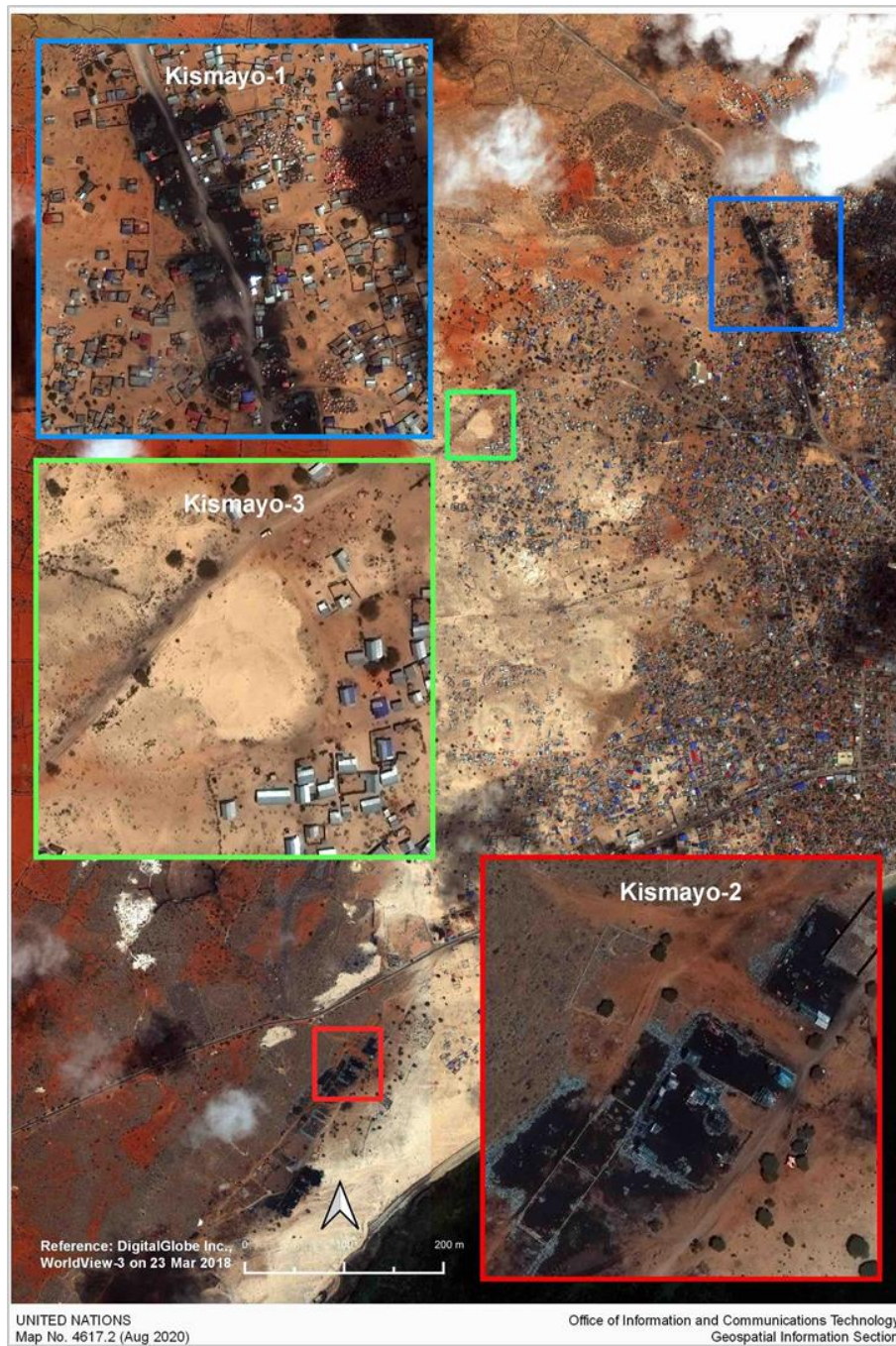


Figure 7: Summary analysis of changes in volume of charcoal stockpiles in Kismayo, Lower Juba, from March 2018 to August 2020. The analysis found that the volume of charcoal did not significantly change from late 2019.



Satellite Analysis: Buur Gaabo and Barawe

Figure 12: Summary analysis of changes in volume of charcoal at stockpiles in Barawe, (historical charcoal export site) and Buur Gaabo, from April 2018 to July/August 2020. The analysis found that the volume of charcoal did not significantly change during 2020.

