



# Metadata Retrieval

Jakarta, August 2024

# Retrieving Crossref metadata

- All metadata made openly and freely available to everyone in the global scholarly community.
- Services for humans - interfaces
- Services for machines - APIs

# Crossref Metadata Search

Search the metadata  
of journal articles, books,  
standards, datasets & more



Title, author, DOI, ORCID iD, etc.

[Search help](#)

Search funders connected to  
published works with funding data

 Search funders...

<https://search.crossref.org/>

# REST API

- Most common API used is our REST API
- XML >> JSON
- For machines, but humans you can paste a query into a browser and get a result.

<https://api.crossref.org/prefixes/10.70188/works?filter=from-created-date:2024-01-01,until-created-date:2024-08-18>

← → ↻ 🔍 api.crossref.org/prefixes/10.70188/works?filter=from-created-date:2024-01-01,until-created-date:2024-08-18 🔍 ☆

🗑️ Delete your Chrom... 📁 Open Access 📁 Crossref links 📁 Support redirects 📁 Similarity Check 📁 Incident response... 📁 Data and softwar... 📁 ISR 📁 Zendesl

```
1 // 20240818222757
2 // https://api.crossref.org/prefixes/10.70188/works?filter=from-created-date:2024-01-01,until-created-date:2024-08-18
3
4 {
5   "status": "ok",
6   "message-type": "work-list",
7   "message-version": "1.0.0",
8   "message": {
9     "facets": {
10
11     },
12     "total-results": 28,
13     "items": [
14       {
15         "indexed": {
16           "date-parts": [
17             [
18               2024,
19               8,
20               14
21             ]
22           ],
23           "date-time": "2024-08-14T00:29:37Z",
24           "timestamp": 1723595377244
```

# The structure of a REST API query

- Server + Endpoint + Parameter
- Server = <https://api.crossref.org>
- Endpoint = "prefixes"
- Parameter =  
filter=from-created-date:2024-01-01,until-created-date:2024-08-18

<https://api.crossref.org/prefixes/10.70188/works?filter=from-created-date:2024-01-01,until-created-date:2024-08-18>

## Funders

 Endpoints that expose funder related data

GET /funders/{id}/works

GET /funders/{id}

GET /funders

## Journals

 Endpoints that expose journal related data

GET /journals

GET /journals/{issn}

GET /journals/{issn}/works

## Works

 Endpoints that expose works related data

GET /works/{doi}

GET /works

GET /works/{doi}/agency

## Prefixes

 Endpoints that expose prefix related data

GET /prefixes/{prefix}/works

GET /prefixes/{prefix}

## Members

 Endpoints that expose member related data

GET /members/{id}/works

GET /members/{id}

GET /members

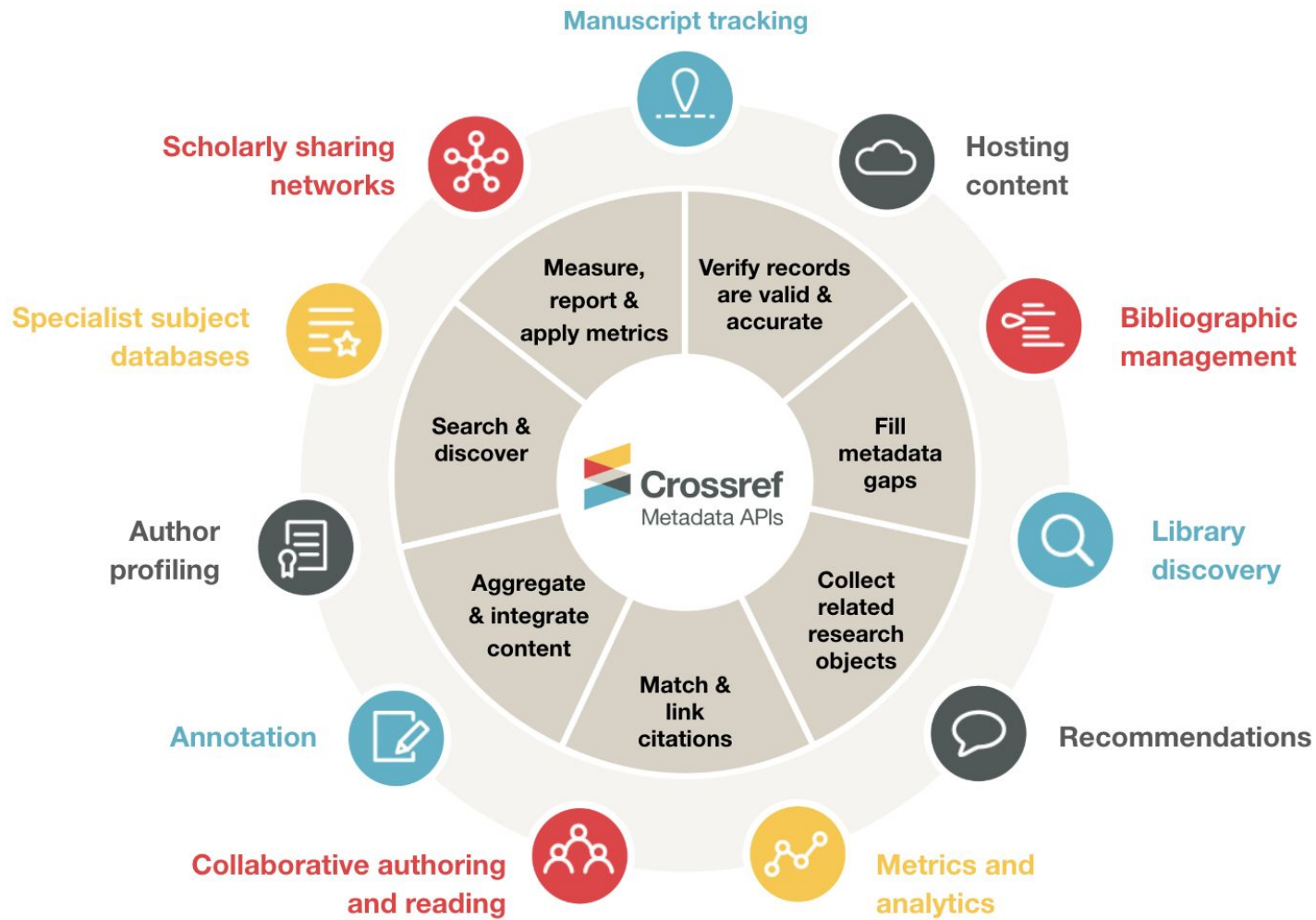
## Types

 Endpoints that expose type related data

GET /types/{id}

GET /types

GET /types/{id}/works





An aerial photograph of a valley filled with hot air balloons at sunrise. The sky is a mix of pink, orange, and light blue. The valley below is rugged and rocky, with some greenery and a winding road. The text "Any questions?" is overlaid in the center in a large, white, sans-serif font.

**Any questions?**