



# ISR - Integrity of the Scholarly Record

Jakarta, August 2024

# What is “The Scholarly Record”?

- The outputs of the research and publishing process create a “scholarly record”
- It’s about more than just published outputs - it’s also a network of inputs, relationships, and contexts
- Rich, comprehensive Crossref records = more context for the whole scholarly research ecosystem.

# Crossref's role

- Crossref doesn't assess the quality of content or the integrity of the research process
- BUT we enable those who produce scholarly outputs to provide metadata (evidence) about how they ensure the quality of content and how the outputs fit into the scholarly record.

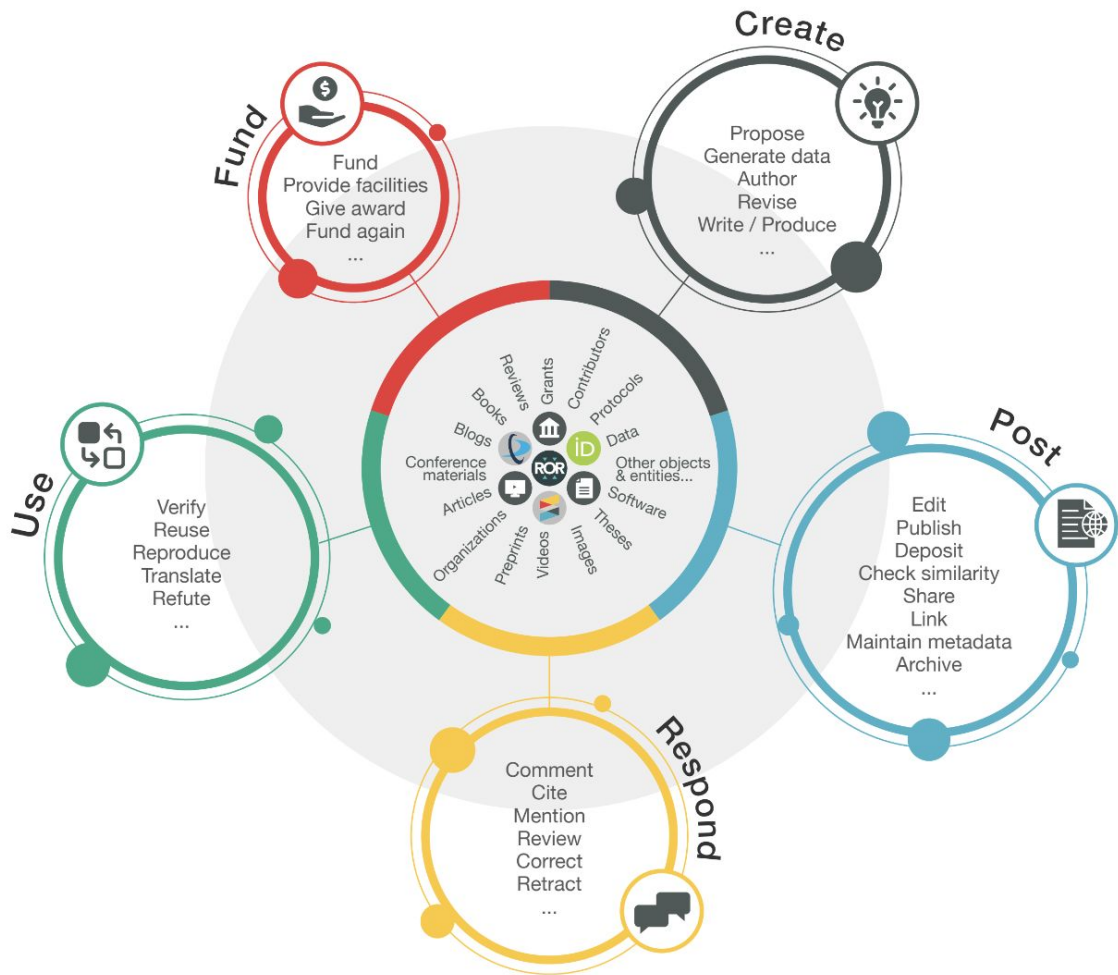


# Our vision

Like others... we envision

“a rich and reusable open network of relationships connecting research organizations, people, things, and actions; a scholarly record that the global community can build on forever, for the benefit of society.”

# Research Nexus



# Our role in ISR

Crossref is focused on enriching metadata to provide more and better trust signals while keeping barriers to membership and participation as low as possible to enable an inclusive scholarly record.

<https://www.crossref.org/categories/research-integrity/>

# Registering “trust signals”

- References
- Abstracts
- License links
- ORCID IDs for authors
- ROR IDs for affiliations
- Grant IDs for funder acknowledgements
- Cite data
- Corrections & retractions via Crossmark





# Similarity Check and iTenticate v2

Jakarta, August 2024



# What we'll cover today

- Similarity Check background and basics.
- iThenticate v2.
- How to get access to iThenticate v2.
- How to tell which version you are using.

# Basics and background

- Similarity Check
- iThenticate
- Turnitin

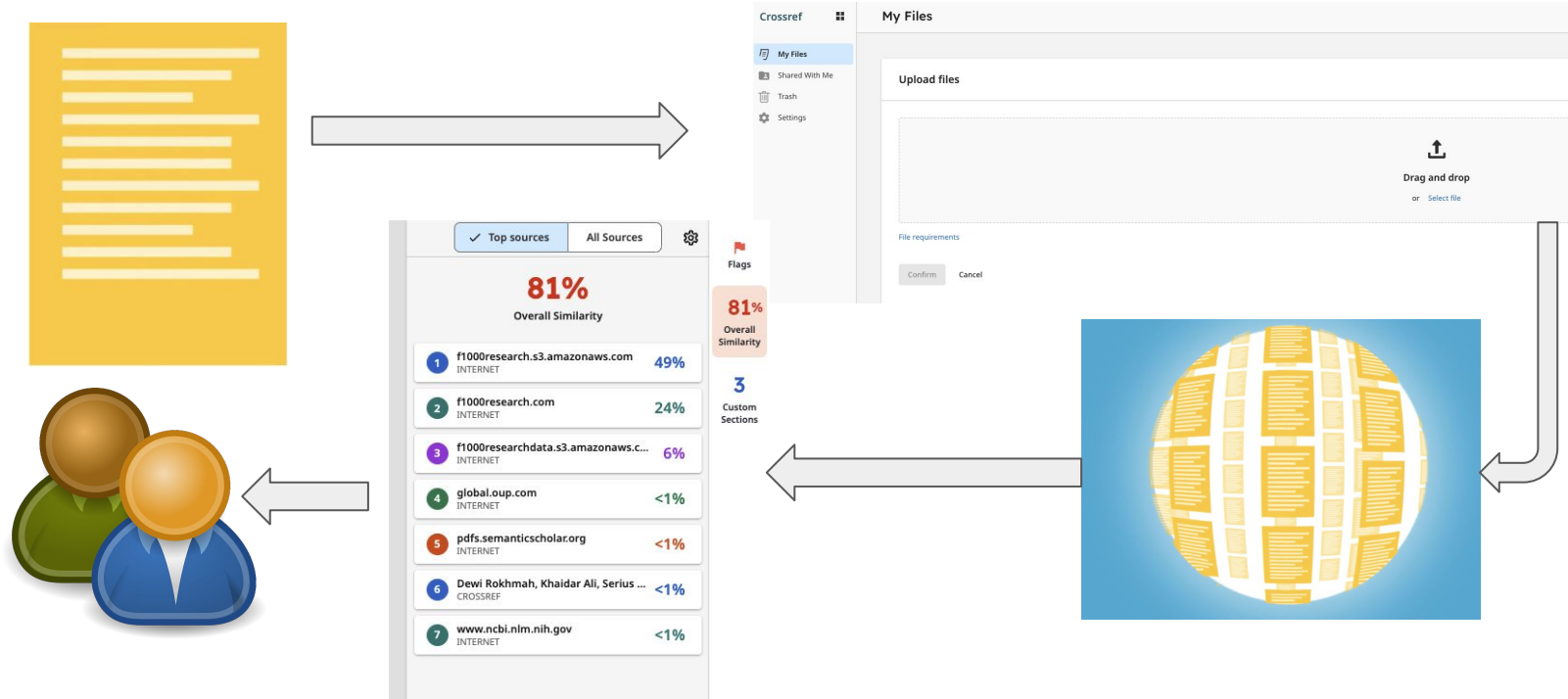
# Similarity Check service

- Optional service with extra fees for Crossref members.
- Reduced rate access to iThenticate tool from Turnitin.
- Only for manuscripts that members are planning to publish - not student work.

# Options for using iThenticate

- Access the iThenticate tool directly through the browser
- Integrate iThenticate into a Manuscript Submission System.

# How iThenticate works



# How to use Similarity Reports

- Checking for similarity, not plagiarism.
- High degree of overlap is *sometimes* fine
  - Preprint by the same authors
  - References to existing work (as long as referenced properly, this is fine)
  - Descriptions of methods etc



# What are publishers looking for?

- Poor, missing, or incomplete references
- Self-plagiarism/text recycling
- Unattributed use of parts of another person's work
- Submitting another person's work as your own
- Is the author attempting to mislead/misrepresent?

# Getting already published content into the iThenticate database

- Crossref DOI records can include a full-text URL for Similarity Check.
- Turnitin's bots can follow that URL and then index the full text of that already-published content into that giant database.

# Eligibility criteria

- Crossref members have to have included those Similarity Check full-text URLs in at least 90% of their DOI metadata records for journal articles.

# Checking eligibility



Home > Documentation > Similarity Check > How to participate in Similarity Check > Checking your eligibility and applying

Search this section

Documentation

Setting up as a member

The research nexus

Metadata principles and practices

Register and maintain your records

Schema library

Reports

Reference Linking

Crossmark

Cited-by

Open Funder Registry

Similarity Check

How to participate in Similarity Check

Checking your eligibility and applying

## Checking your eligibility and applying

< How to participate in Similarity Check

Adding full-text URLs to new deposits >

Update 2024: We are no longer able to offer the Similarity Check service to members based in Russia. [Find out more.](#)

Similarity Check is only available to Crossref members who have full-text URLs for Similarity Check present in the metadata of at least 90% of their registered articles (across all journal prefixes). These URLs must point directly to the full-text PDF, HTML, or plain text content and if your content is behind authentication, you need to safelist the Turnitin IP address. Learn more about [how to participate](#).

You can check the percentage of Similarity Check URLs already included in your metadata using the widget below - just start typing your account name in the box, select the correct one from the list, and your result will be automatically calculated. Don't worry, you don't need to know your Member ID.

If you do meet the threshold, the widget will link you to a form where you can apply for Similarity Check and click to accept the service terms. If you don't meet the threshold, the widget will provide a .csv file to download which shows all your DOIs that don't have Similarity Check full-text URLs. It will also provide instructions for how to [add the missing full-text URLs](#).

Member Name

Member ID

Member Name

Member ID

Results for Clute Institute (ID:8103)

9705/9708 = 99.97%

Good news - you're eligible to apply for our Similarity Check service.

You can now [apply here](#) and accept the service terms.

<https://www.crossref.org/documentation/similarity-check/participate/eligibility/>

# Adding Similarity Check URLs

webDeposit Ver. 1.56

Enter the article's metadata and then continue with more articles or complete the deposit by selecting 'Finish'. Mandatory fields a marked by an "\*\*", but in general it is best practice to enter as much data as you can.

Step 3: Input the article metadata.

Deposit Data

```
<journal_metadata>
<full_title>Journal of Psychoeramics</full_title>
<abbrev_title>JOP</abbrev_title>
<issn media_type='print'>12345678</issn>
</journal_metadata>
<journal_issue>
<publication_date media_type='print'>
<year>2022</year>
</publication_date>
</journal_issue>
```

Article information

Title\*

Original Title (for translated works only)

**Contributors - people and/or organizations**

Person contributor	Role	First Name	Last Name	ORCID	
	author	<input type="text"/>	<input type="text"/>	<input type="text" value="https://orcid.org/"/>	<input type="button" value="Add Contributor"/>
Organization contributor		<input type="text"/>			<input type="button" value="Add Organization"/>

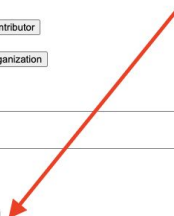
Abstract Language  Abstract

DOI\*

URL\*

First page:  Last page:

.....





# iThenticate v2



# What is iThenticate v2?

- New improved version of the iThenticate tool.
- Separate from version 1 so Similarity Check subscribers need to upgrade and move over to version 2.

# Why upgrade to iThenticate v2?

- Faster, more user-friendly and responsive interface.
- Preprint exclusion filter to identify content on preprint servers more easily.
- “Red flag” feature to signal hidden text such as text/quotation marks in white font, or suspicious character replacement.

# Why upgrade to iThenticate v2?

- iThenticate v1 will only continue to be live until mid year next year (2025).
- Turnitin won't be adding any improvements or new features to iThenticate v1.

# Who can use iThenticate 2?

- Anyone who accesses the tool directly via the browser.

# Who can use iThenticate v2?

Anyone who has iThenticate integrated with the following Manuscript Submission Systems

- Editorial Manager
- Scholastica
- ScholarOne
- EJournal Press
- Morressier
- Some in-house systems

# Who can use iThenticate v2?

- OJS does NOT currently integrate with iThenticate v2, but it's COMING SOON!
- In-house manuscript submission systems will need to work to integrate with v2.





# Getting access to iThenticate v2

# Eligibility

- To upgrade from v1 to v2, members need to still be eligible - at least 90% of their journal article DOIs must include Similarity Check URLs in the metadata record.

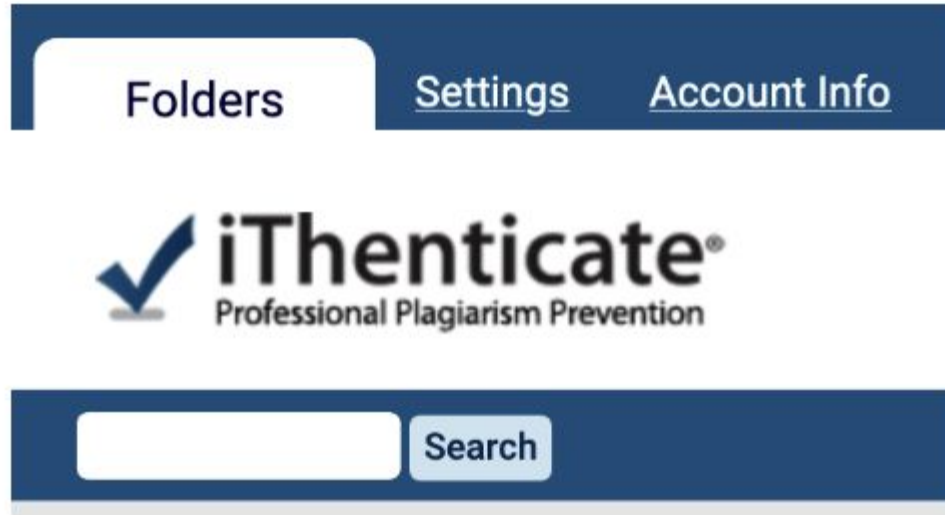
# Upgrades for browser users

- Eligible users - SimCheck URLs over 90%
- Ineligible users - SimCheck below 90%
-



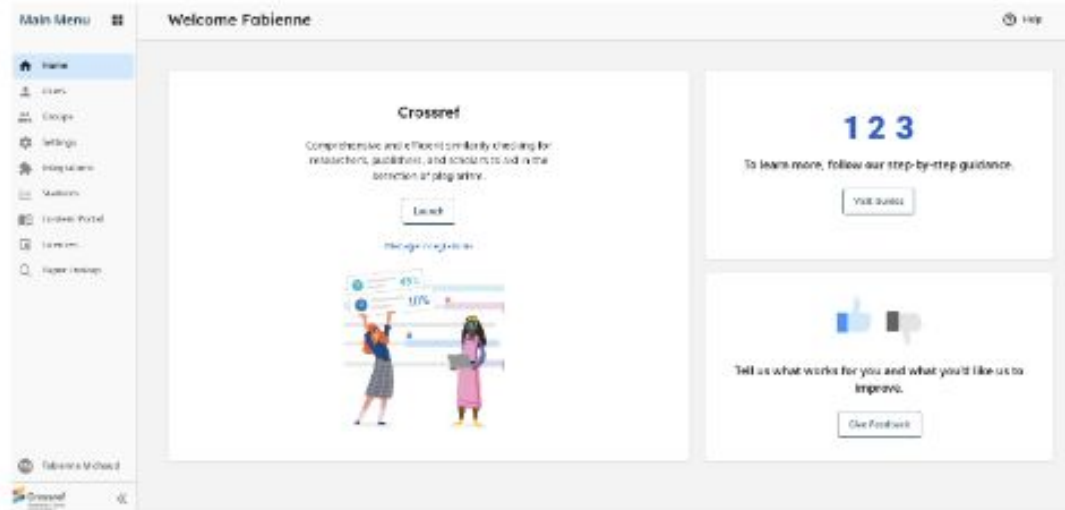
**Which version  
am I using?**

# iThenticate v1



If you access iThenticate through the browser, you will use the address [ithenticate.com](https://ithenticate.com).

# iThenticate v2



If you access iThenticate through the browser, you will use a bespoke URL: [https://crossref-\[your member ID\].turnitin.com](https://crossref-[your member ID].turnitin.com)





**Any questions?**



**Thank you  
Terima kasih!**

**Jakarta, August 2024**