

# METADATA RETRIEVAL CHEAT SHEET



1

## START HERE

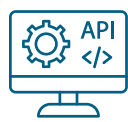
<https://api.crossref.org>

This will take you straight to the documentation.

## 3 You can retrieve metadata by...



Pasting your query in your web browser search bar. It is possible that you might need a JSON file viewer plugin to properly visualize the output.



Using an API web/desktop client such as Postman

2

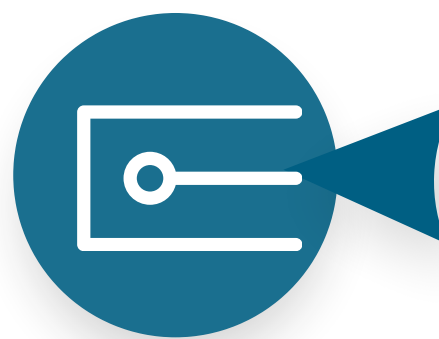
## THE ELEMENTS OF YOUR QUERY



### BASE URL

<https://api.crossref.org/>

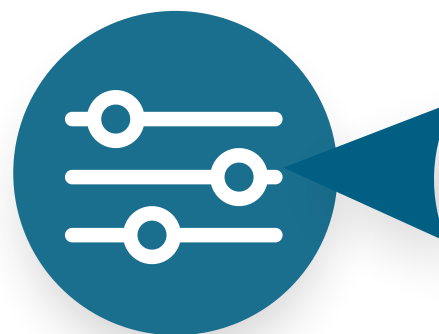
All your queries will have this element in common.



### ENDPOINT

**WORKS**

Take a look at the documentation for more endpoints



### PARAMETERS

[?mailto=yourname@org.com&rows=0](mailto=yourname@org.com&rows=0)

Add them after the ? sign. Add multiple parameters separating them with an & sign

4

## REMEMBER

- Make a polite request by adding the mailto parameter and your email.
- You can transform the JSON file into a CSV using our labs tool <https://labs-toolkit.fly.dev/>
- Using lengthy query terms or combining multiple parameters may result in slow performance and extended response times.

5

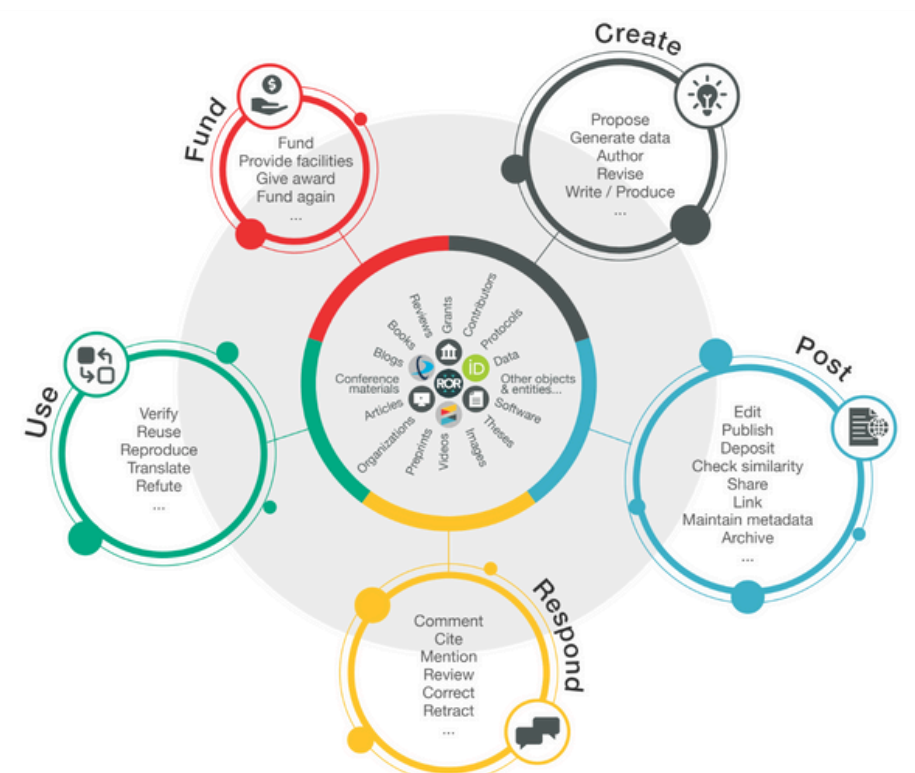
## COMMONLY USED PARAMETERS

facet	Counts of metadata categories
filter	Allow you to narrow queries/filter data by condition
query	Look for terms e.g. topics, phrases
mailto	Contact email
rows	Number of results per page

6

## SOME EXAMPLES THAT YOU CAN COPY AND ADAPT

- Records having the word "climate" in the metadata and see how many there are:  
<https://api.crossref.org/works?query=climate&rows=0>
- Works funded by 10.13039/100000001 that have a CC-BY license:  
<https://api.crossref.org/funders/10.13039/100000001/works?filter=license.url:http://creativecommons.org/licenses/by/3.0/>
- All works published in the journal Pathology Research International:  
<https://api.crossref.org/works?filter=issn:2090-8091>
- All works where the archive partner listed = 'CLOCKSS':  
<https://api.crossref.org/works?filter=archive:CLOCKSS>



# METADATA RETRIEVAL CHEATSHEET



## Resource types

Notice that for most resources, you can filter your elements if you have a specific id

Endpoint	sub-resource
Funders	/funders
	/funders/{id}
	/funders/{id}/works
Journals	/journals
	/journals/{issn}
	/journals/{issn}/works
Licenses	/licenses
Members	/members
	/members/{id}
	/members/{id}/works
Prefixes	/prefixes/{prefix}
	/prefixes/{prefix}/works
Types	/types/
	/types/{id}
	/types/{id}/works
Works	/works
	/works/{doi}
	/works/{doi}/agency

## Content types

These content types can be used when you include the parameter **filter=type:{selected types}**

book	journal-issue
book-chapter	journal-volume
book-part	monograph
book-section	other
book-series	peer-review
book-set	posted-content
book-track	proceedings
component	proceedings-article
database	proceedings-series
dataset	reference-book
dissertation	reference-entry
edited-book	report
grant	report-component
journal	report-series
journal-article	standard

Parameters like filters and facets have dozens of possible values. Check out [api.crossref.org](https://api.crossref.org) for the specific filters and facets available for each endpoint.

### Additional resources:

<https://gitlab.com/crossref/tutorials>  
<https://community.crossref.org/>

This work © 2024 by Crossref is licensed under CC BY-NC 4.0