

An Introduction to Crossref Bangladesh

02 May 2023



@CrossrefOrg



Agenda

- An introduction to Crossref - who we are and what we do
- The value and use of metadata for content discovery
- Our Global Equitable Membership (GEM) program
- How to apply for membership
- Additional Crossref services for members
- Q&A

About Us





Our mission

Crossref makes research outputs easy to find, cite, link, assess, and reuse.

We're a not-for-profit membership organization that exists to make scholarly communications better.

Crossref Overview



20,000+ members and affiliates

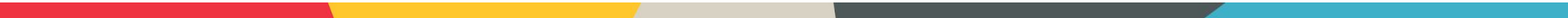
150 countries

144 million+ content items

600 million queries/month

one billion DOI resolutions/month

Why organizations join Crossref

- Connect content with a global network of online scholarly research
 - Create a persistent identifier for each object
 - Improve discoverability of publications through robust metadata
 - Find out who is citing your content
 - Participate in other collaborative services
- 

The value and use of metadata

Members —> Crossref



Basic metadata: titles; author names; ISSN/ISBNs, abstracts, references, DOI and URL of content location

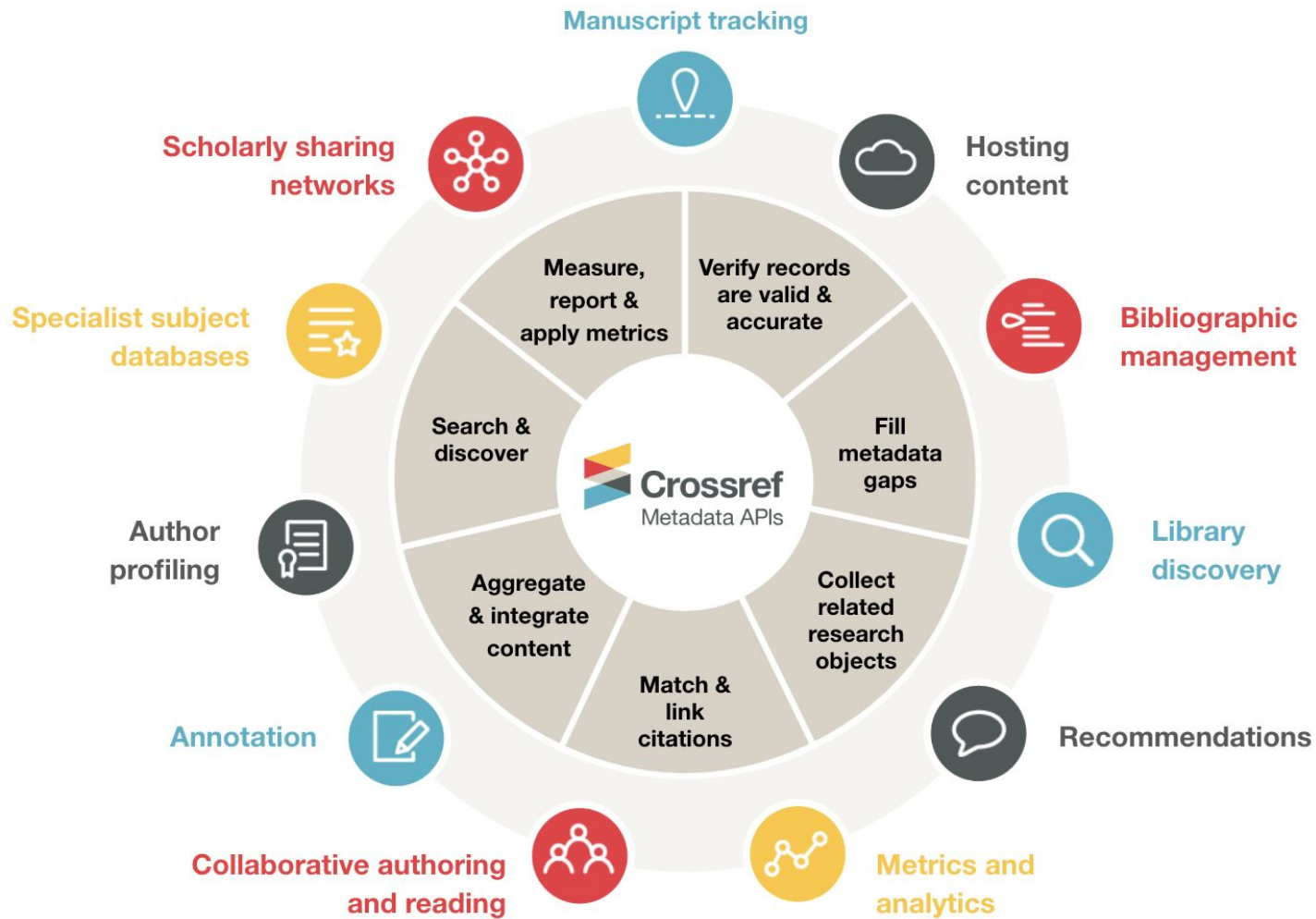
Funding information: Funder identifiers, award numbers

Contributor/Affiliations: ORCID, ROR

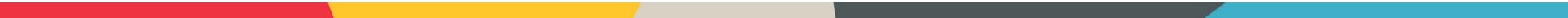
License information: License URLs,
Full-text URLs: e.g. for text-mining and Similarity Check

Crossmark: updates, retractions, corrections
ORCID iDs

And more: Peer Review reports, relationships, links to related data, Grant identifiers



Metadata enables:

- Discoverability
 - Reproducibility
 - Research and editorial integrity
 - Reporting and assessment
- 

Global Equitable Membership (GEM) Program

Global Equitable Membership (GEM) program



Crossref
**Global
Equitable
Membership**

From Afghanistan to Zambia...

Announcing the new GEM Program, so that publishers in 58 countries have one less thing to worry about.

Afghanistan Bangladesh Benin Bhutan Burkina Faso Burundi Cambodia Central African Republic Chad Comoros
Democratic Republic of the Congo Cote d'Ivoire Djibouti Eritrea Ethiopia Gambia Ghana Guinea Guinea-Bissau Guyana
Haiti Honduras Kiribati Kosovo Kyrgyzstan Laos Lesotho Liberia Madagascar Malawi Maldives Mali Marshall Islands
Mauritania Micronesia Mozambique Myanmar Nepal Nicaragua Niger Rwanda Samoa Sao Tome and Principe Senegal Sierra
Leone Solomon Islands Somalia South Sudan Sudan Tajikistan Tanzania Togo Tonga Tuvalu Uganda Vanuatu Yemen Zambia

crossref.org/gem

What does GEM cover?

Yes

- Annual member fee
- Content registration fees

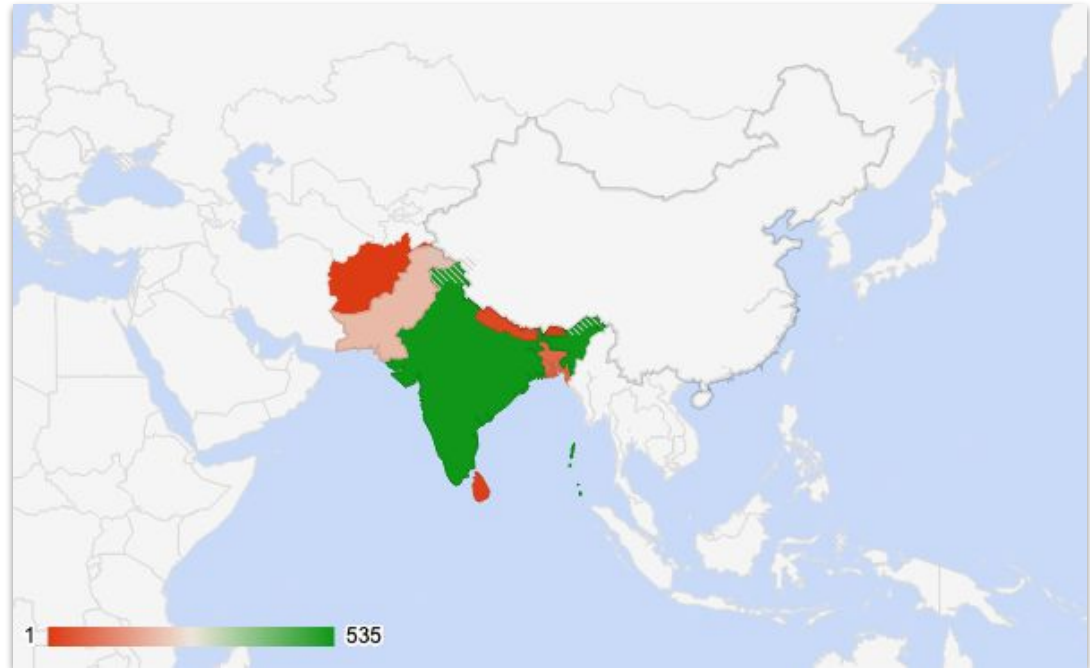
No

- Similarity Check fees
- Metadata plus fee

(these are both optional services
and not required for any member)

Participation in South Asia

Afghanistan	4
Bangladesh	72
Bhutan	5
India	535
Maldives	1
Nepal	25
Pakistan	200
Sri Lanka	13



Getting started as a new member



Become a member

<https://www.crossref.org/membership/>

First Steps

We send you:

- Your unique prefix
- Login and instructions to set your password
- Review of the different methods for registering your content

What content types can I register at Crossref?

Journals

Books

Book chapters

Conference proceedings

Datasets

Dissertations

Reports

Standards

Posted content (preprints)

Peer reviews

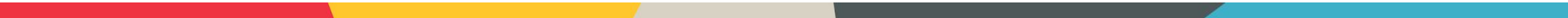
Grants

Ways to register content

- OJS Crossref plugin
(<https://docs.pkp.sfu.ca/crossref-ojs-manual/en/config>)
- Manual web deposit form
(<https://apps.crossref.org/webdeposit>)
- Upload XML file
(<https://doi.crossref.org>)

Additional services

Services for our members:

- Reference linking
 - Cited-by
 - Similarity Check
 - Crossmark
- 

Reference linking

Reference linking enables researchers to follow a link from the reference list to other full-text documents, helping them to make connections and discover new things.

<https://www.crossref.org/services/reference-linking/>

Cited-by

Cited-by provides an overview of the publications that have cited a piece of content helping to build a picture of how research has been received by the community.

<https://www.crossref.org/services/cited-by/>



Similarity Check

Similarity Check offers publishers with a way to actively engage in efforts to prevent plagiarism, using a service provided by Crossref and powered by iThenticate

<https://www.crossref.org/services/similarity-check/>

Crossmark

Crossmark provides a cross-platform way for readers to quickly discover the status of a research output along with additional metadata related to the editorial process

<https://www.crossref.org/services/crossmark/>

In Conclusion...



Next webinar: Registering your content with Crossref

Tuesday, 9 April 7pm BST (UTC+6)

- What a DOI is (and isn't)
- What can you register with Crossref
- How to register content
- Updating and adding metadata



Thank-you

- Documentation: <https://www.crossref.org/documentation/>
- Technical support support@crossref.org
- Membership team member@crossref.org
- Community Forum: <https://community.crossref.org>



@CrossrefOrg